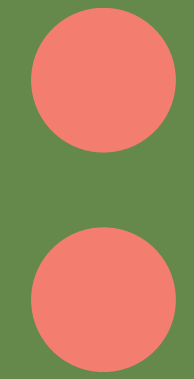


how to make an affective cartography?



# pleasure, entretamas!

We are a group formed by 18 students from Fundação Getúlio Vargas in the discipline Formação Integrada para a Sustentabilidade (Integrated Training for Sustainability).

As a final product of the course, in 2023, we developed an affective cartography that illustrates how mangroves contribute to sustaining life on the planet.

Thus, in this document, we will teach you how to build an affective cartography. Enjoy!




entretamas

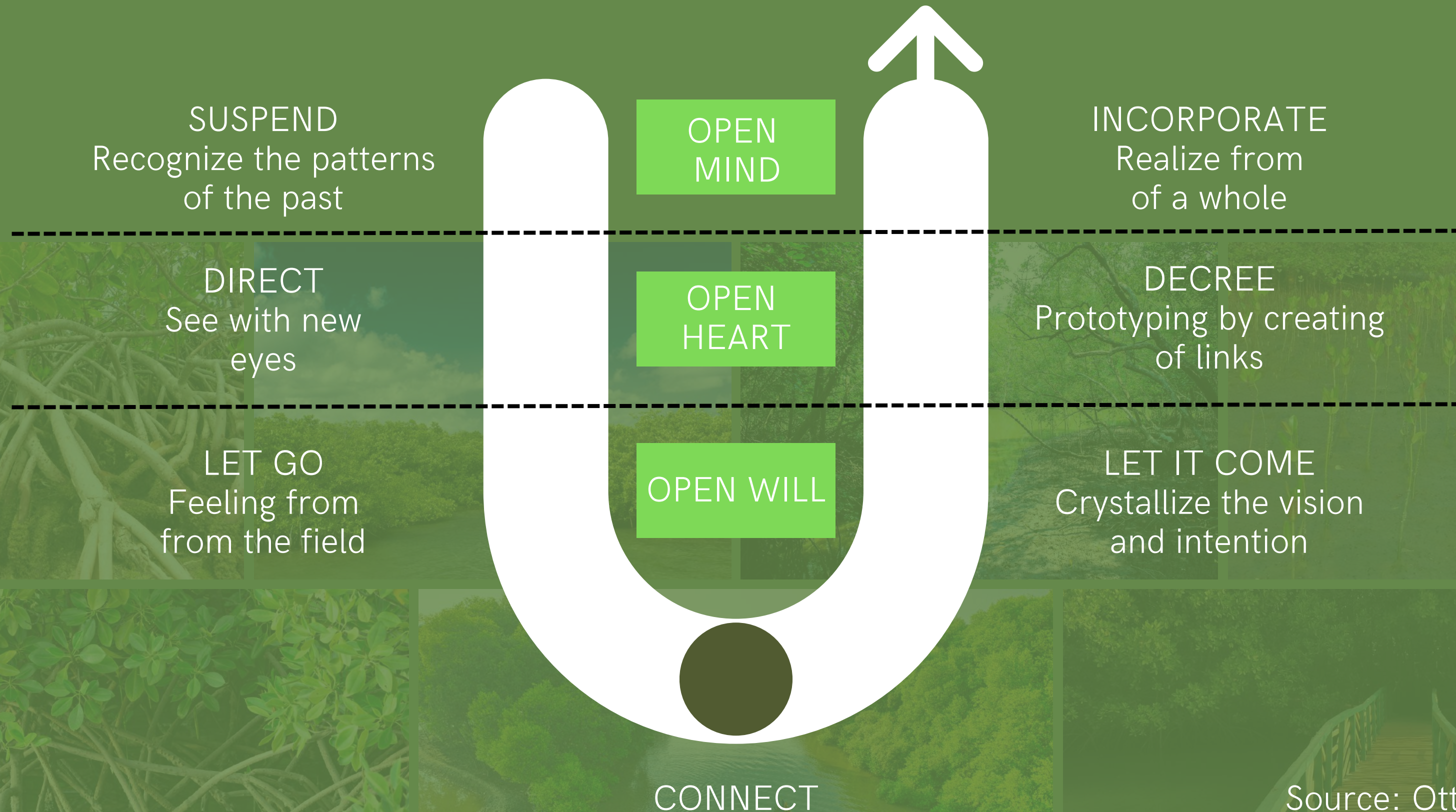


## but what is an affective cartography?

Affective cartography is a process of understanding the cartographer (the author of the map) about the world around him, the exercise of placing himself on the map and reflecting on his place on this map that leads him to think about his identity, gender, race, ethnic representation, his knowledge about his space and networks, and to question the very production of the public space to which he has access and from which circuits he is excluded (ANA PAULA DO VAL)



# methodological approach: theory u



Source: Otto Scharmer

# step 1: suspend

Supporting material: [click here!](#)

From your topic and objective of the cartography, this phase seeks to understand and respond:

1

What do I understand or not understand about the theme? What about affective cartography?

2

What previous knowledge do I have regarding the topic of interest and affective cartography?

3

Do I have preconceptions about the theme and affective cartography? What are they?

where are we leaving from?



## step 2: targeting

get qualified!

Supporting material: [click here!](#)



active  
learning

Search and read related bibliographies: magazines, articles, books.

It is important to have a broad and deep knowledge about the subject and cartography.



passive  
learning

Create and participate in a schedule of trainings and lectures on the subject.

In addition, talk to experts and references on the subject and in affective cartography



differences

Understand the main differences about the theme and affective cartography.

Ex: cultural mapping x affective cartography. Understanding what it is and what it is not is essential.

## step 3: let it go

Supporting material: [click here!](#)

- 1 Visit the territory/location studied in affective cartography.
- 2 Talk to the people interested and involved in the theme.
- 3 Have conversations with the the community.
- 4 Have an open heart and an open mind. And exercise your sensitive listening.



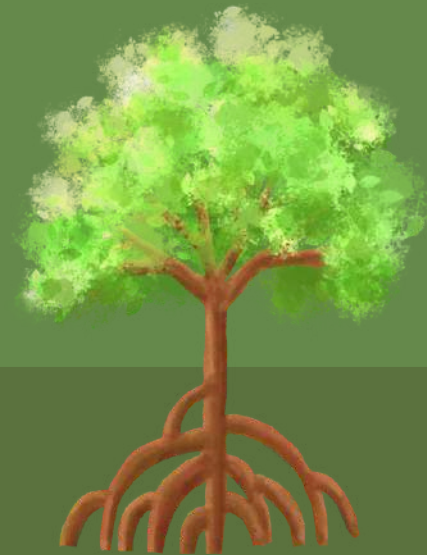
# step 4: connect

Supporting material: [click here!](#)



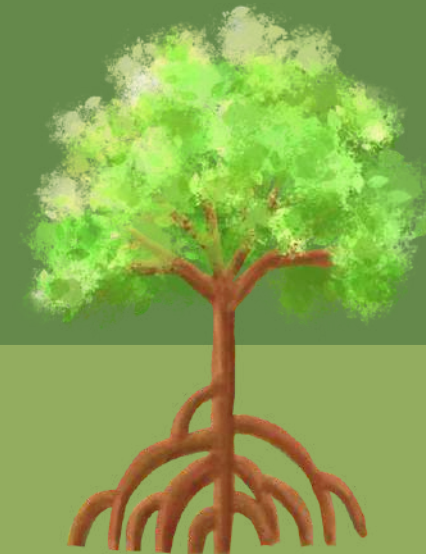
assimilate

Understand and assimilate the experiences from the field. What did I experience?



recognize

Reflect on the experiences and the inputs collected in the field. What impacted me?



reflect

Recognize the crossings and ways that the field has affected you. How have I changed?

understand the impacts

## step 5: let it come

Supporting material: [click here!](#)



Set up a time for everyone in the group to be able to contribute and have their say on the final product.



Brainstorm about the main elements and formats of cartography and learnings from the field.



Organize, select, and prioritize ideas. Understand which ideas have potential and which don't.

brainstorming!

# step 6: enact

Supporting material: [click here!](#)

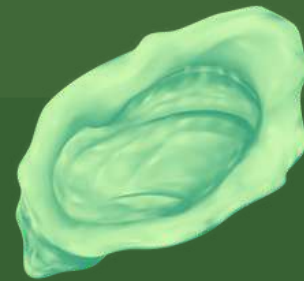
crystallize



plan it

What is the goal and what do we want to learn from building the prototype? How do we know we are arriving at the final product?

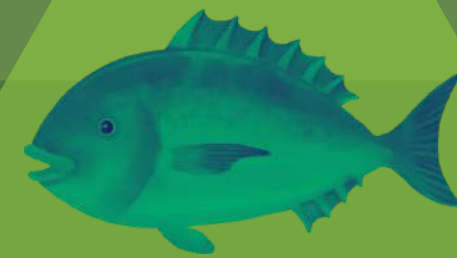
prototype



implement

Develop the prototype or prototypes from the inputs of step 5 and the planning already done.

create



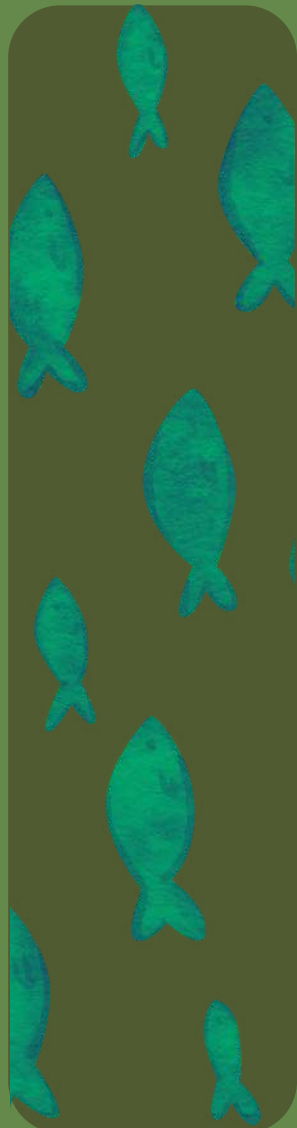
learn

Collect feedbacks, from everyone involved, on the prototypes built. Analyze the cycle, understanding learnings and mistakes.

## step 7: incorporate

Supporting material: [click here!](#)

hands-on!



Materialize the results that went right in the prototyping phase. What went right? And what went wrong?

Understand what the priority format is, what elements cannot be missing, and what can be left out. And put your ideas together and put them into practice.

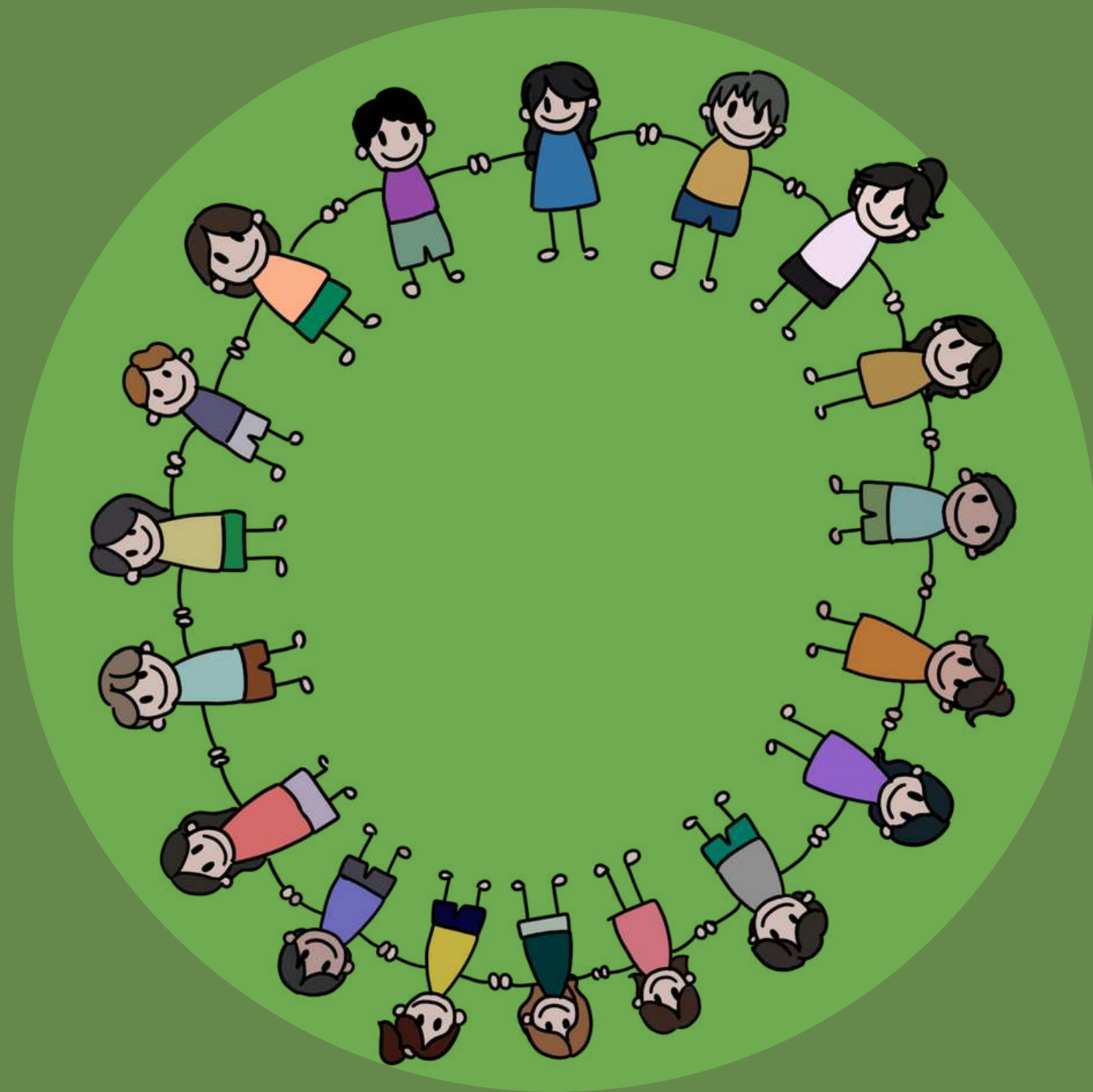
Organize and divide the group and manage the necessary activities. And create a schedule.

Build the final cartography!

# example: fis affective cartography



To learn more, [click here!!](#)



Organization



Technical Support



2021  
2030  
Década das Nações Unidas  
da Ciência Oceânica para  
o Desenvolvimento Sustentável

Sponsored by



ariel levi  
bruna novaes  
camilla myrrha  
carolina kipnis  
diogo ascariz  
helena machado  
josé oliveira  
letícia fagundes  
laura andrade

luiza lutfalla  
maria clara secall  
marianna bwainain  
nicole sanseverino  
nicholas santim  
renan kenji  
rodrigo crescenzo  
thiago cleto  
vitória beccato